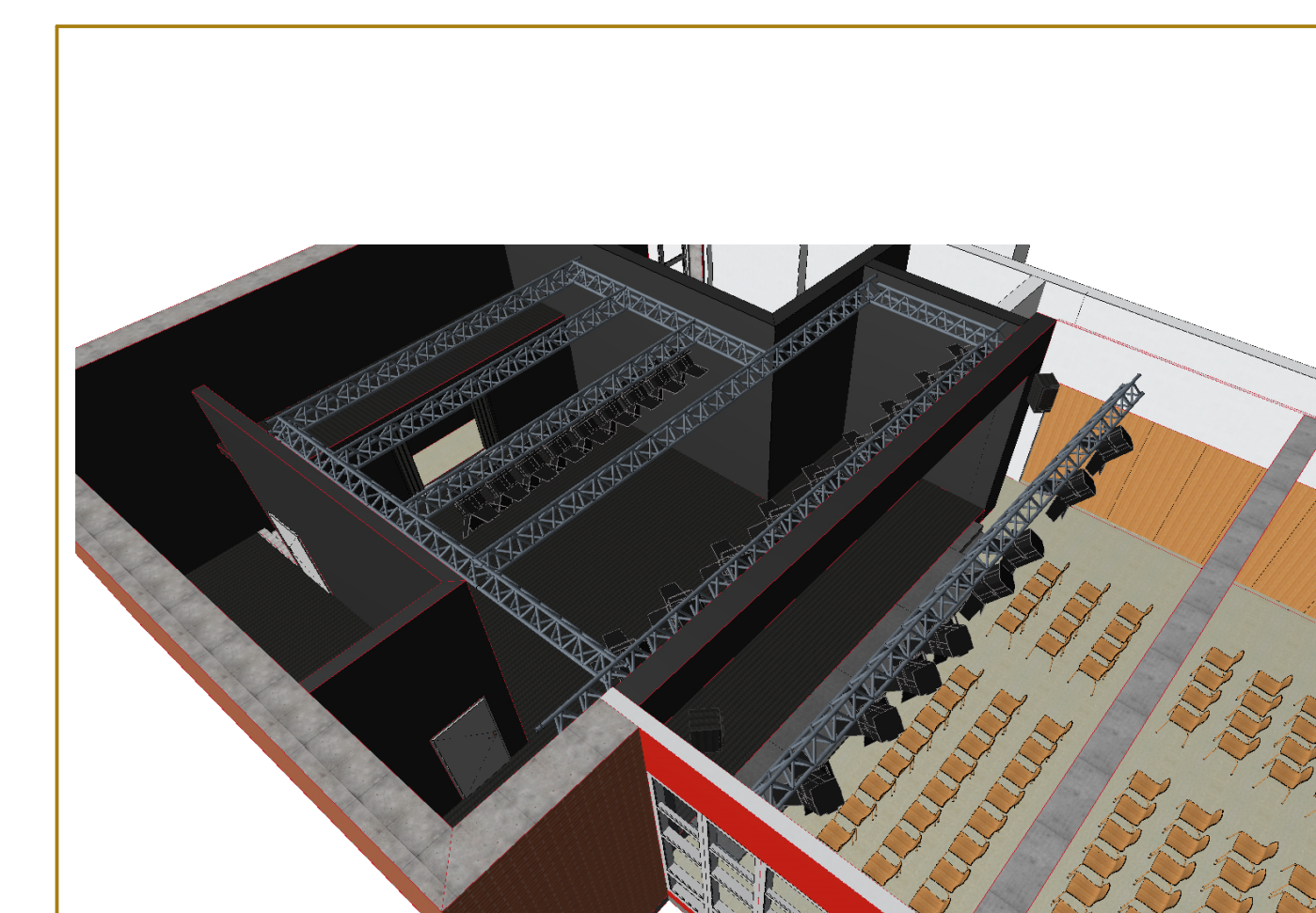
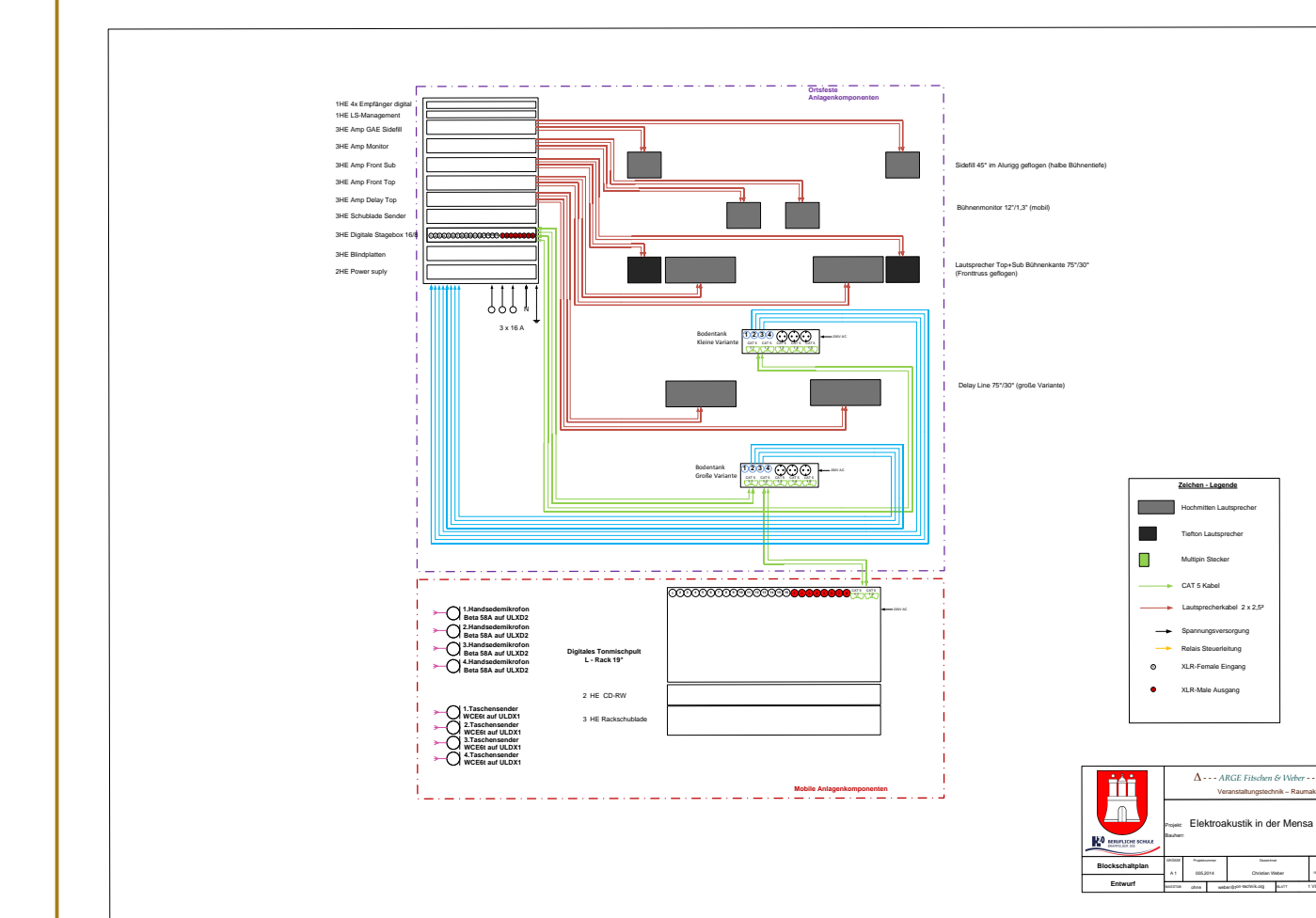
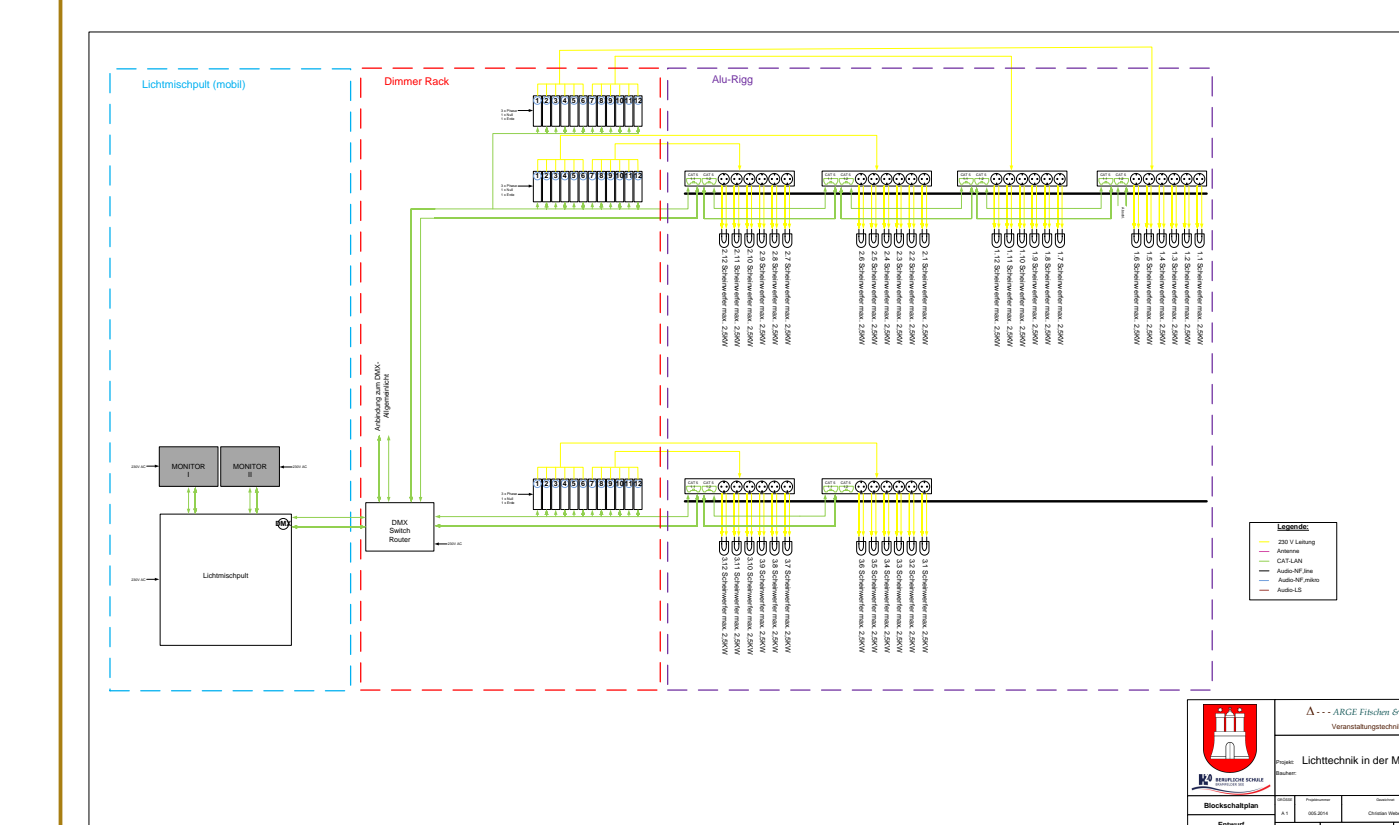
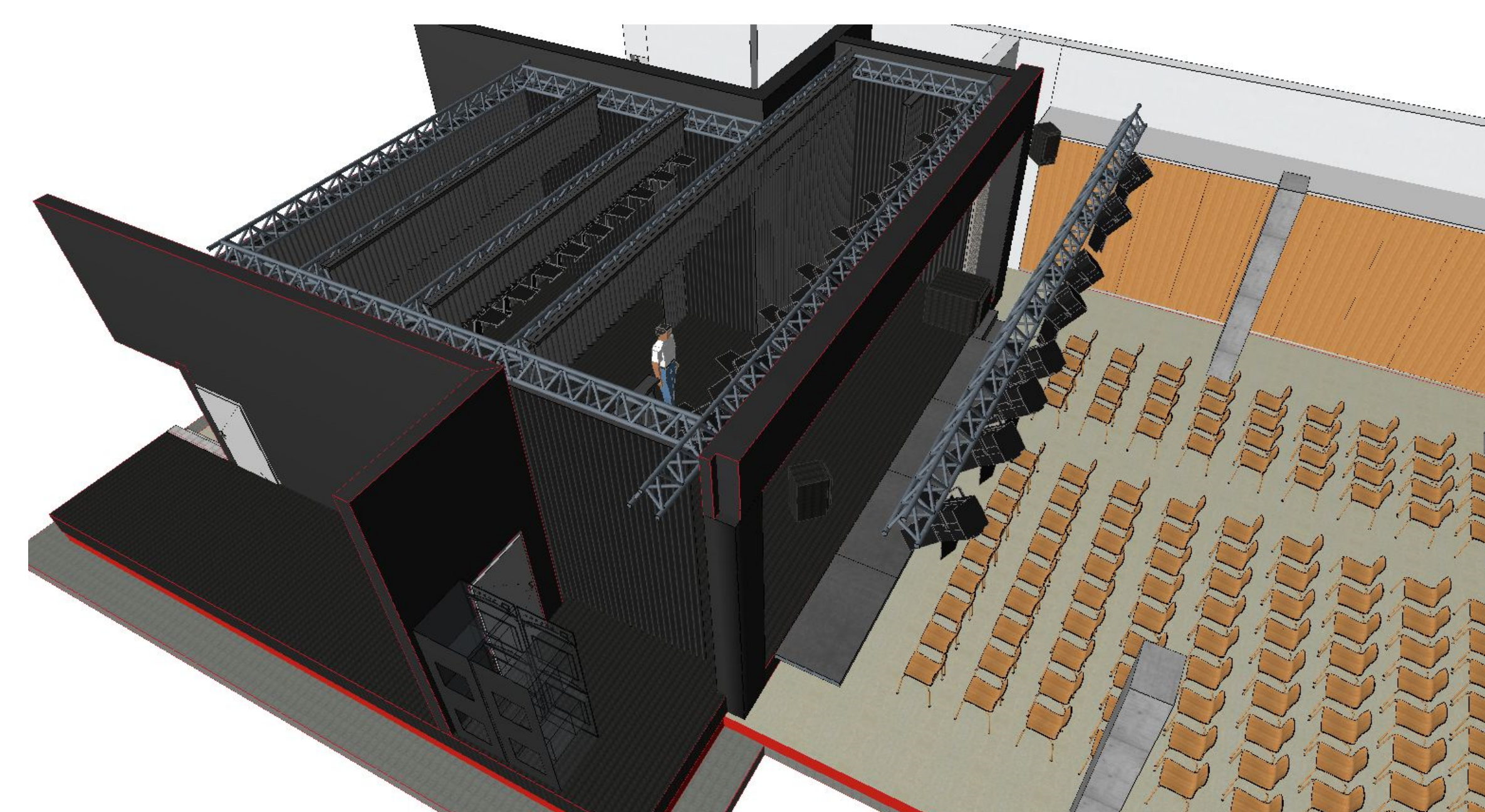


| SPL calculation | | Signal selection | | Air absorption | |
|-----------------|-----------|---------------------|---------|----------------|-------|
| Resolution: | High (1m) | Level (dBu): | 0.0 | On/Off: | Off |
| Highest SPL: | 104.3 dB | Signal: | 1000 Hz | Temperature: | 20 °C |
| | | Show interferences: | Off | Humidity: | 60% |



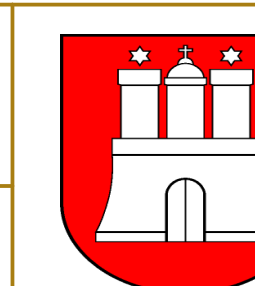
BÜROPROJEKT:
**ERWEITERUNGSNEUBAU
 BERUFLICHE SCHULE H⁷ und H 7**

BAUWERK:
**Freie und Hansestadt Hamburg
 SBH Schulbau Hamburg**

PLANVERFASSER:
 ARGE *Fitschen & Weber*
 Veranstaltungstechnik - Raumakustik
 Beratung - Planung - Sound-Design - Sound-Engineering

PROJEKTSTADIUM:
ENTWURF

PLANKITTEL:
VERANSTALTUNGSTECHNIK



BERUFLICHE SCHULE
 HAMBURG

GEZEICHNET:
C.WEBER

DATUM:
 27. November 2014

MAßSTAB:
 1:100
 PLAN NR.:
 01